



## Smetana Open Air Opera Festival

# 51<sup>st</sup> Smetana's Litomyšl 12 June - 6 July 2009

*The entire Smetana's Litomyšl festival program 2009 will carry in a festive spirit presenting a great selection of the operatic art. This year dramaturgy is themed „Europa Musicalis“.*

### PROGRAM AND PRICE LIST

**Friday 12 June 2009 • 20:00 hrs • Litomyšl - 2<sup>nd</sup> Litomyšl Castle Courtyard**

#### **CEREMONIAL OPENING CONCERT - FROM MY LIFE**

*Felix Mendelssohn-Bartholdy: Symphony Nr. 4 in A major, Op. 90 "Italian"*

*Franz Joseph Haydn: Concerto for Trumpet and Orchestra in E flat major*

*Bohuslav Martinu: Magic Nights, H. 119 Three songs on Chinese lyrics for soprano & orchestra*

*Bedrich Smetana (arr. George Szell): From my Life (String Quartet Nr. 1 in E minor arranged for orchestra)*

Performed by: Katerina Kneziková - soprano, Ole Edvard Antonsen - trumpet, Symphonic Orchestra of the Czech Radio

Conductor: Ondrej Lenard

Entrance fee: • A 790 CZK • B 490 CZK • C 390 CZK • Wheelchairs 80 CZK



**Saturday 13 June 2009 • 15:00 and 20:00 hrs • Litomyšl - Smetana Hall**

#### **Ales Brezina / Jiri Nekvasil: TOMORROW IT WILL ...**

*Opera - trial. Court proceedings against JUDr. Milada Horakova - performed on an authentic site where an actual court trial was conducted against Rector F. A. Střiteský and 23 Litomyšl Students in 1950.*

Performed by: Sona Cervena, Jan Mikusek, Kühn Children Choir, Canti di Praga, instrumental ensemble PurPur, Orchestra of the National Theatre Prague

Director: Jiri Nekvasil

Conductor: Marko Ivanović

Entrance fee: • A 300 CZK • B 250 CZK • C 200 CZK



**Sunday 14 June 2009 • 18:00 hrs • Litomyšl - 2<sup>nd</sup> Litomyšl Castle Courtyard**

#### **THE NATIONAL THEATRE TO SMETANA'S LITOMYŠL**

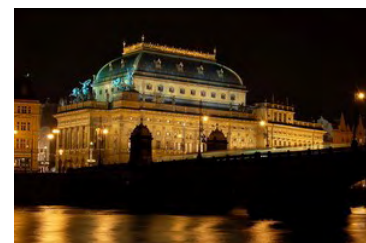
*A festive concert to the 60<sup>th</sup> anniversary of the Smetana's Litomyšl festival.*

*Arias, ensembles and choirs from the Czech and world operas by Bedrich Smetana, Antonin Dvorak, Pyotr Ilyich Tchaikovsky, Charles Gounod, Charles Gounod, Camille Saint-Saëns, Giacomo Puccini, Giuseppe Verdi and Richard Strauss.*

Performed by: Soloists - Maria Haan, Katerina Knezikova, Marie Fajtova, Ales Briscein, Ivan Kusnjer, Miloslav Podskalsky; ensemble and orchestra of the Opera of the National Theatre Prague

Conductor: Tomas Netopil

Entrance fee: • A 690 CZK • B 390 CZK • C 290 CZK • Wheelchairs 70 CZK





**Monday 15 June 2009 • 20:00 hrs • Litomysl - 2<sup>nd</sup> Litomysl Castle Courtyard**

**MAGDALENA KOZENA - LETTERA AMOROSA**

*Italy and Spain in music of the 17<sup>th</sup> century performed by a renowned singer and a top chamber ensemble of old instruments.*

Performed by: Magdalena Kozena - mezzosoprano, Private Musicke

Artistic director: Pierre Pitzl

Entrance fee: • A 1.290 CZK • B 990 CZK • C 790 CZK • Wheelchairs 130 CZK



**Tuesday 16 June 2009 • 18:00 hrs • Litomysl - Smetana's House**

**BEETLES and PUSS IN BOOTS**

*Vaclav Trojan: BEETLES*

*Jiri Teml: PUSS IN BOOTS - Premiere!*

*Two one-act operas for younger audiences.*

Performed by: Instrumental ensemble, Kühn's Children's Choir

Conductor: Jiri Chvala



Entrance fee: 200 CZK / no seat reservation, 50% discount for children under 15 and students

**Friday 19 June 2009 • 21:00 hrs • Litomysl - Castle Amfitheatre**

**Antonin Dvorak: RUSALKA**

Performed by: Dagmar Peckova, soloists, choir and orchestra of the Opera of the National Theatre Prague

Director: Jiri Herman

Conductor: Zbynek Müller

Entrance fee: • A 790 CZK • B 490 CZK • C 390 CZK • Wheelchairs 80 CZK



**Saturday 20 June 2009 • 16:00 hrs • Litomysl - Smetana's House**

**HOMMAGE A MARTINU**

*Josef Suk: Piano Quartet in A minor, Op. 1*

*Bohuslav Martinu: Piano Quartet, H. 287*

*Antonin Dvorak: Piano Quartet in E flat major, Op. 87*

Performed by: Bohuslav Martinu Piano Quartet: Bohuslav Matousek - violin, Pavel Perina - viola, Miroslav Petras - cello, Emil Leichner - piano



Entrance fee: • A 200 CZK • B 150 CZK • C 100 CZK, 50% discount for children under 15 and students

**Saturday 20 June 2009 • 21:00 hrs • Litomysl - Castle Amfitheatre**

**Antonin Dvorak: RUSALKA**

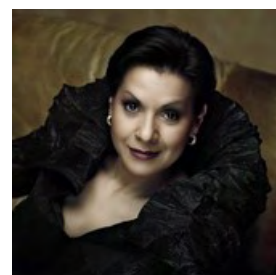
*Lyrical opera in three acts, libretto by Jaroslav Kvapil.*

Performed by: Dagmar Peckova, soloists, choir and orchestra of the Opera of the National Theatre Prague

Director: Jiri Herman

Conductor: Zbynek Müller

Entrance fee: • A 790 CZK • B 490 CZK • C 390 CZK • Wheelchairs 80 CZK





**Sunday 21 June 2009 • 11:00 hrs • Litomyšl - Castle Audience Hall**

**FESTIVE MATINEE - MEREL QUARTET (Switzerland)**

*Concert by an excellent Swiss quartet featuring works by jubilants of the year 2009 - Joseph Haydn, Felix Mendelssohn-Bartholdy and others.*

Performed by: Merel Quartet: Mary Ellen Woodside - 1st violin, Meesun Hong - 2nd violin, Alexander Besa - viola, Rafael Rosenfeld - cello

Entrance fee: • 200 CZK / no seat reservation



**Sunday 21 June 2009 • 18:00 hrs • Litomyšl - 2<sup>nd</sup> Litomyšl Castle Courtyard**

**YOU RUBY FOUNTAIN**

*A premier of the author's program by Jiri Pavlica from a cycle „In the World of Children“. Dance and music workshop for little listeners and their parents, during which they will not only listen to the music, but also get actively involved in the concert together with professional musicians and and their guests.*

Choreography: Ladislava Kosikova

Performed by: Hradistan and guests

Artistic director: Jiri Pavlica



Entrance fee: • A 690 CZK • B 390 CZK • C 290 CZK • Wheelchairs 70 CZK, 50% discount for children under 15 and students

**Monday 22 June 2009 • 21:00 hrs • Litomyšl - Litomyšl Castle Baroque Theatre**

**CASTLE NOCTURNE**

*Harpsichord in the works by jubilants of the year 2009. Featuring Jan Krtitel Vanhal, Jan Zach, Karl Ditters von Dittersdorf, Frantisek Xaver Richter, Joseph Haydn.*

Performed by: soloists of Musica Salutaris ensemble

Artistic director and harpsichord: Vojtech Spurny



Entrance fee: • A 350 CZK • B 250 CZK • C 50 CZK

**Tuesday 23 June 2009 • 20:00 hrs • Litomyšl - 2<sup>nd</sup> Litomyšl Castle Courtyard**

**Zuzana Lapcikova: ORBIS PICTUS**

*A world premiere of the oratorium written on text by Johann Amos Comenius.*

Performed by: Zuzana Lapcikova Kvintet, Zuzana Lapcikova, Ales Prochazka - vocals, Czech Philharmonic Choir Brno, Philharmony of Bohuslav Martinu Zlin

Conductor: Stanislav Vavrinek



Entrance fee: • A 490 CZK • B 390 CZK • C 290 CZK • Wheelchairs 50 CZK, 50% discount for children under 15 and students

**Wednesday 24 June 2009 • 20:00 hrs • Litomyšl - Piraist Church**

**SUSANNE RYDEN & MUSICA FLOREA (Sweden)**

*Baroque music performed by outstanding Swedish soprano singer accompanied by the ensemble of the authentic instruments featuring works by Johann Sebastian Bach, Jan Dismas Zelenka, Johann Josef Ignac Brentner, Antonin Reichenauer.*

Artistic director: Marek Stryncl



Entrance fee: • 450 CZK / no seat reservation





## Smetana Open Air Opera Festival

**Thursday 25 June 2009 • 18:00 hrs • Litomyšl - 2<sup>nd</sup> Litomyšl Castle Courtyard**

**Leonard Bernstein: KADDISH**

*Leos Janacek: Taras Bulba - rhapsody for orchestra*

*Bohuslav Martinu: Rhapsody - Concerto for viola and orchestra, H. 337*

*Leonard Bernstein: KADDISH - Symphony no. 3 for orchestra, mixed choir, boys' choir, narrator and mezzosoprano on texts of Jewish prayer and the author.*

*In Czech (recitation) and Hebrew (singing) language versions.*

Performed by: Jitka Hosprova - violin, Sona Cervena - recitation, Jana Wallingerova - mezzosoprano, Bonifantes Boys' Choir of Pardubice, Choirmaster Jan Mišek, Czech Philharmonic Choir Brno, Choirmaster Petr Fiala, Brno Philharmonic Orchestra

Conductor: Leos Svarovsky



Entrance fee: • A 690 CZK • B 390 CZK • C 290 CZK • Wheelchairs 70 CZK,  
50% discount for holders of tickets for the cancelled performance of 25 June 2008

**Friday 26 June 2009 • 21:00 hrs • Litomyšl - 2<sup>nd</sup> Litomyšl Castle Courtyard**

**21st CENTURY BALLET - A NIGHT OF THREE EUROPEAN CHOREOGRAPHERS  
D.M.J. 1953 - 1977 PETR ZUSKA**

*A performance by the artistic leader of the Ballet of the National Theatre in Prague won numerous awards; it was chosen as the only cultural programme to represent the city of Brno during the 14th meeting of the Central-European presidents held there in 2007.*

Music: Antonin Dvorak, Bohuslav Martinu, Leos Janacek

Costumes: Roman Solc

Stage set, lighting design, choreography, director: Petr Zuska



**BAROCCO JACEK PRZYBYLOWICZ**

*A suite of dynamic contrasting images inspired by the spirit of the Baroque period, created by an important Polish dancer and choreographer.*

Music: Johann Sebastian Bach, Josef Klíč

Costumes, stage set, lighting design, choreography: Jacek Przybyłowicz

**A MOMENT FOR THE STRAWBERRY MOUTH MARIO SCHRÖDER**

*This original choreography, whose author is the artistic director of the ballet theater in Kiel, Germany, was written exclusively for the Brno ensemble.*

Music: Von Magnet, Phil Von, Zap Mama, Laurie Anderson

Costumes, stage set, lighting design, choreography: Mario Schröder

Performed by dancers: Soloists and members of the Ballet Ensemble of the National Theatre in Brno.

Music from playback / Josef Klic - cello solo (Barocco)

Entrance fee: • A 790 CZK • B 490 CZK • C 390 CZK • Wheelchairs 80 CZK

**Saturday 27 June 2009 • 20:00 hrs • Litomyšl - 2<sup>nd</sup> Litomyšl Castle Courtyard**

**CONCERT BY POPULAR REQUEST - MAGIC MELODIES OF THE SILVER SCREEN**

*Comeback to famous film melodies featuring movies Godfather, Gladiator, Saving Private Ryan, Platoon, Underground, Mechanical Orange and others.*

Performed: Prague Philharmonic Choir, Big Orchestra of the Zofin Palace

Choirmaster: Lukas Vasilek

Conductor: Marko Ivanović



Entrance fee: • A 690 CZK • B 390 CZK • C 290 CZK • Wheelchairs 70 CZK



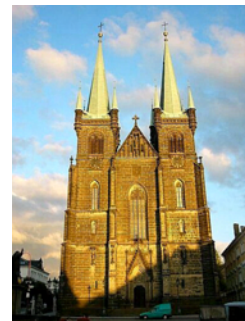
**Sunday 28 June 2009 • 15:00 hrs • Chrudim - Church of the Assumption of the Virgin Mary**

**Georg Friedrich Händel: MESIAH**

*Monumental oratorium.*

Performed by: Alena Hellerova - soprano, Eva Garajova - mezzosoprano, Jaroslav Brezina - tenor, Roman Janal - bass, Czech Boys' Choir BONI PUERI, choimasters: Pavel Horák, Jakub Martinec, Czech Chamber Philharmonic Orchestra Pardubice

Conductor: Marek Stryncl



Entrance fee: • 250 CZK / no seat reservation

**Sunday 28 June 2009 • 20:00 hrs • Litomyšl - 2<sup>nd</sup> Litomyšl Castle Courtyard**

**EUROPA MUSICALIS**

*A concert at the occasion of a symbolic relay handover of the European Union presidency to Sweden.*

*Wilhelm Stenhammar: Excelsior! Concert Overture, Op. 13*

*Leif Segerstam: Symphony No. 199 „At the End of the Second Century“*

*Bedrich Smetana: My Country, highlights from a cycle of symphonic poems*

Performed by: Prague Symphony Orchestra

Conductor: Leif Segerstam



Entrance fee: • A 890 CZK • B 690 CZK • C 490 CZK • Wheelchairs 90 CZK

**Tuesday 30 June 2009 • 21:00 hrs • Litomyšl - 2<sup>nd</sup> Litomyšl Castle Courtyard**

**Giacomo Puccini: MADAMA BUTTERFLY**

*Japanese tragedy in two acts. Libretto by Luigi Illica und Giuseppe Giacosa.*

*Performed in the Italian original, with Czech and English subtitles.*

Performed by: Christina Vasileva (Madama Butterfly), State Opera Prague

Director: Karel Jernek

Conductor: Jiri Strunc



Entrance fee: • A 790 CZK • B 490 CZK • C 390 CZK • Wheelchairs 80 CZK

**Wednesday 1 July 2009 • 21:00 hrs • Litomyšl - 2<sup>nd</sup> Litomyšl Castle Courtyard**

**VIVAT OPERETA!**

*Famous melodies, arias, choirs and ballet performances from work by Franz Lehar (The Land of Smiles), Emmerich Kálmán (Countess Maritza) and Johann Strauss II (The Bat).*

Performed by: Soloists, choir, ballet and orchestra of the State Opera Prague

Director: Petr Kracik

Conductor: Pavel Snajdr



Entrance fee: • A 790 CZK • B 490 CZK • C 390 CZK • Wheelchairs 80 CZK





**Thursday 2 July 2009 • 19:30 hrs • Svitavy - Grand Hall, Fabrika Cultural Centre**

**ANJA BUKOVEC (Slovenia) - OFF-SITE CONCERT IN SVITAVY**

*Recital by a top Slovenian virtuoso featuring the following program:*

Maurice Ravel: Tzigane. Rhapsodie de concert, for violin and piano

Ernst Bloch: Baal Shem Suite

Grazyna Bacewicz: Polish Capriccio for solo violin

John Williams: Three Pieces from Schindler's List

Vic Mizzy: Tango from Addam's Family Values etc. ...

Performed by: Anja Bukovec - violin, Simon Krecic - piano



**Entrance fee: • 250 CZK / no set reservation**

**Friday 3 and Saturday 4 July 2009 • 21:00 hrs • Litomyšl - 2<sup>nd</sup> Litomyšl Castle Courtyard**

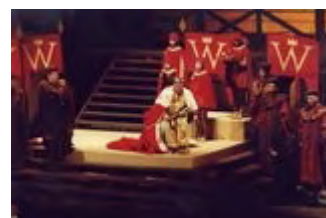
**Bedrich Smetana: DALIBOR**

*A three-act opera on lyrics by Josef Wenzig. 1<sup>st</sup> and 2<sup>nd</sup> premiere.*

Performed by: Gianluca Zampieri alt. Luciano Mastro, opera ensemble of the National Moravia-Silesian Theatre Ostrava

Director: Ludek Golat

Conductor: Oliver Dohnanyi



**Entrance fee: • A 790 CZK • B 490 CZK • C 390 CZK • Wheelchairs 80 CZK**

**Sunday 5 July 2009 • 10:15 hrs • Litomyšl - Piarist Church of the Discovery of the Holy Cross**

**CEREMONIAL HOLY MASS**

*Traditional thanksgiving service on the Czech public holiday - the Day of Sts Cyril and Methodius, the Apostles of the Slavs.*

Main celebrant: Mons. Tomas Halik

Music accompaniment: Jan Hanus: Mass VII, Glagolitic, in Honor of the Czech

Patrons for bass solo, mixed choir, organ and bells.

Performed by: Jiri Sulzenko - bass, Jirina Markova - organ, Marketa Mazourová - bells, Kühn's Mixed Choir

Conductor: Marek Vorlíček



**Admission free**

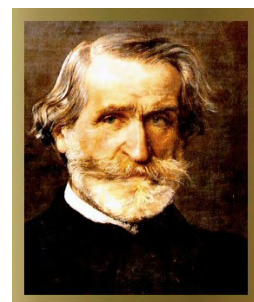
**Sunday 5 July 2009 • 19:00 hrs • Litomyšl - 2<sup>nd</sup> Litomyšl Castle Courtyard**

**GIUSEPPE VERDI: REQUIEM**

*Performance of the famous Verdi's Mass featuring 160 members of the American choir.*

Performed: Soloists - Jitka Burgetová - soprano, Karla Bytnarova - mezzosoprano, Tomas Cerny - tenor, Lukas Hynek-Krämer - Bass, Colorado Symphony Chorus (USA), philharmonic orchestras of Hradec Kralove and Pardubice

Conductor: Duain Wolfe



**Entrance fee: • A 790 CZK • B 490 CZK • C 390 CZK • Wheelchairs 80 CZK**





**Monday 6 July 2009 • 19:00 hrs • Litomyšl - 2<sup>nd</sup> Litomyšl Castle Courtyard**

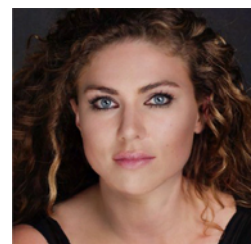
**STARS OF THE OPERATIC SKY - ANNETTE DASCH (Germany)**

**ANNETTE & AMADEUS**

*The final gala concert of the renowned German soprano singer presenting arias by Wolfgang Amadeus Mozart (The Marriage of Figaro, Don Giovanni, Così fan tutte, La Clemenza di Tito, The Magic Flute etc. ...)*

Performed by: Prague Philharmonia

Conductor: Alexander Joel



Entrance fee: • A 1.290 CZK • B 990 CZK • C 790 CZK • Wheelchairs 130 CZK

**Friday 28 August 2009 • 19.00 Hrs • Policka - St. James Church**

**I MET AUTUMN ... - SPECIAL OFF-SITE CONCERT**

*On the day of the 50<sup>th</sup> anniversary of the death of Bohuslav Martinu, the church of his birth will resound with highlights of the cantatas Opening of the Wells and Bouquet of Flowers, The Field Mass and the Birth of Jesus from the opera Plays of Mary.*

Performed by: Ivan Kusnjer - baritone, and other soloists under negotiation, Kühn

Mixed Choir, Czech Chamber Philharmonic Orchestra Pardubice

Choirmeister: Marek Vorlíček

Dirigent: Marko Ivanović



Entrance fee: • 300 CZK / no seat reservation



**THE RIGHT TO CHANGE A PROGRAM AND PERFORMERS IS RESERVED.**

**Important Notes:**

- *The final program for Smetana's Litomyšl to be announced by 16 February 2009.*
- *Tickets pre-sale will be launched on 4 March 2009.*
- *Tickets will be distributed by end-March 2009.*



*See you in Litomyšl 2009,*